

THE SONOMA COUNTY
WINE LIBRARY



The Sonoma County Wine Library

is a special collection and service of the Sonoma County Library. It acts as a source of scientific and technical information within the wine industry, provides marketing and other essential business data on winemaking around the world, and preserves the rich heritage of grape growing and winemaking in Northern California. It is supported largely by its subscribers: growers, wineries and wine-related businesses, by the Sonoma County Library, and by individuals who join the Wine Library Associates.

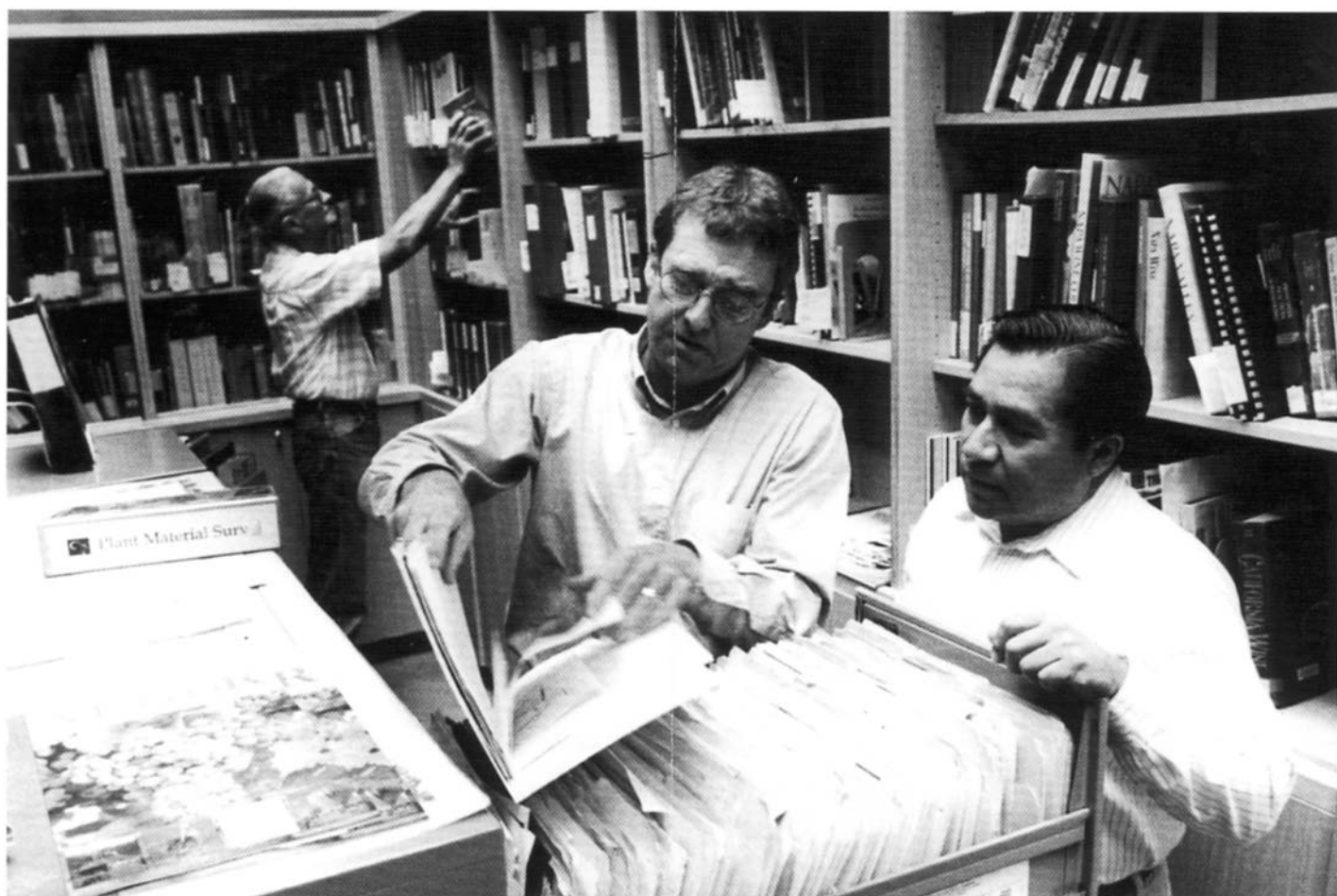
Who uses the library?

AN ASSOCIATION OF GROWERS wishes to inform the State Legislature about the nature and extent of the state's phylloxera infestation. They want materials that are informative yet do not require a Ph.D. in entomology to understand. They need not only current information, but also source material on 19th century infestations in the state.

A WINERY MARKETING DIRECTOR, about to introduce a line of new Rhône-type wines, can find only limited tasting notes and superficial descriptions of the Rhône varietals. He needs to know how the soil and climate of California influence the production of Syrah, Mourvedre, Cinsault, Viognier, Marsanne and Roussanne, and how the wines, when produced locally, differ from those of the Rhône Valley and the Côte du Rhone. The director then needs to know the demographics of Generation Xers he is trying to reach.

A GRAPE GROWER, about to plant a new vineyard, has chosen the varietal Pinot Noir. He wants to find out the latest research on the most promising clones, and the best methods of cultivation. He knows research exists on layout, site preparation, planting patterns, spacing, training, trellising, and canopy management that will maximize yield and quality, but does not know how to obtain the information.

A WRITER doing an article on mulled wine needs some history on flavored and heated wines. He has heard that



in the Middle Ages wine flavored with clove and other spices was thought to cure various ailments. He needs authoritative sources to confirm and expand on this information.

A WINE COLLECTOR is systematically assembling a group of Zinfandels from the region. He knows the varietal is peculiar to California, but wants to know more about its history, the best vintages and which of the early vineyards may still be producing.

These seekers and many others like them have found exactly what they were looking for at the Sonoma County Wine Library. It is a unique community- and industry-supported institution, staffed by experienced library professionals, assisted by knowledgeable volunteers, in a state-of-the-art facility at the center of the Sonoma wine country.

We invite you to join as a subscriber.

What the Wine Library offers you.

As a Wine Library subscriber you will have full access to a collection and an informed staff of researchers you could not possibly otherwise assemble or maintain. You get all this for the price of a few journals. Here is how we can help your business:

REFERENCE SERVICES. Our staff have both wine and information backgrounds. They will help you find exactly the information you need: a certain statistic, a hard-to-find article, a source of specific historical information. Most reference services are provided free. Extensive research will be undertaken for modest fees.

ONLINE DATABASE SEARCHES. Our librarians have access to commercial information services, products and vendors such as Dialog, Agricola, Food Science and Technology Abstracts, Dunns Market Identifiers, IAC Prompt and more. Not only do we have accounts with these

providers, we have expertise in extracting the relevant information from them. Information from these and other sources is available to you as a Library Subscriber.

BOOKS. We will help you research any wine subject in the Library's more than 5,000 volumes, including rare and out-of-print works, some of which date back 500 years, many of them beautifully illustrated.

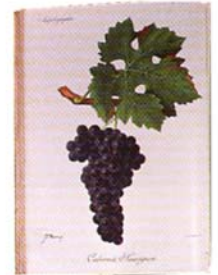
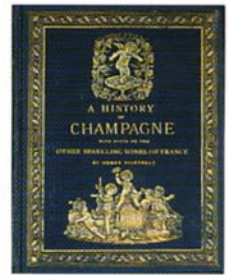


PERIODICALS. As a Wine Library Subscriber, you will have access to the latest published wine information on any wine topic. The Library subscribes to more than 75 scholarly journals, trade publications, newsletters, tasting notes, and consumer publications on wine — many of which are indexed for ready access.

WINEFILES.ORG. The library's vast Wine Information Files are now on the Web. Full citations, summaries of most articles, and links to the full text of some articles are all there at <http://www.winefiles.org>. Search by numerous access points (author, region, wine/variety, etc.) The database also contains a large historical component.



PHOTOGRAPHS AND ART. A large and growing collection of photographs documents winemaking in Northern California from the 19th century to the present.



MARKETING AND TECHNICAL REPORTS. The Library gets regular updates of all significant wine marketing, statistical, and technical reports, including *The United States Wine Market*, *US WineStats*, The Adams Media (formerly Jobsons) family of reports, *Grape Crush Reports* and the *Grape Intelligence Reports*.

CONSULTING SERVICES. Our staff will be available to advise you on how to make the most effective use of the Library, including guided tours of the Library collections, and assistance in planning wine-related research. A special orientation is offered to all new Wine Library subscribers.

How to subscribe.

Complete the accompanying subscription form and mail it with your check to Sonoma County Wine Library at the address below, or contact the librarian on duty at 707-433-3772, extension 5.

The Sonoma County Wine Library

Piper and Center Streets, Healdsburg, CA 95448

Tel 707-433-3772, fax 707-433-7946

email bo@sonoma.lib.ca.us

On the web www.sonomalibrary.org/wine

Access the Library's catalog at catalog.sonomalibrary.org

Praise for the Wine Library



The Sonoma County Wine Library is an incredible professional resource. When I have a question on a wine-making topic they have always been able to supply the latest articles as well as more obscure references. Bo Simons has helped me obtain information for presentations as well as cellar operations. We are so lucky to have them.

CHRISTINA BENZ, *Winemaker, Murphy-Goode*

I look at the Sonoma County Wine Library as an incomparable resource for information and research. When I need answers, articles, data, or historical background on any subject related to wine, I think of the Sonoma County Wine Library.

JOEL PETERSON, *Ravenswood Winery*

One of the great strengths of the Library is its collection of ephemera. There are many sources of information when it comes to tracing the broad outlines of California's wine history, but very few that can flesh out the details that bring it to life. The collection of local newspaper clips, price lists, and brochures is of immense value and sheds light on all else. It makes the Library a truly living resource.

GERALD ASHER, *Wine Editor, Gourmet Magazine*

CREDITS Design and production supervision: James Robertson, The Yolla Bolly Press. Photography: John Youngblood. Composition and digital files: Farris Graphics. Printing: Mariner Graphics Inc.

The Sonoma County Wine Library SUBSCRIPTION FORM

Please check one of the following:

- winery making less than 10,000 cases per year \$75
- winery making 10,000-30,000 cases per year \$150
- winery making 30,000-100,000 cases per year \$300
- winery making 100,000-200,000 cases per year \$450
- winery making more than 200,000 cases per year \$550
- grower with less than 10 acres in production \$40
- grower with between 10 and 20 acres in production \$80
- grower with more than 20 acres in production \$150
- company other than winery or grower \$150

Name

Company

Title

Address

City, state, zip

Phone

Fax

E-mail



Please mail this form with your check to THE SONOMA COUNTY WINE LIBRARY, Piper and Center Sts., Healdsburg, CA 95448. Phone 707-433-3772. Fax 707-433-7946. Questions about the Wine Library and its services should be directed to Bo Simons, Librarian, or other staff.